



SPECTATOR GUIDE

U.S. Paralympics Cycling Open Huntsville, Alabama April 8-10, 2022

The Huntsville/Madison County community is excited to host the U.S. Paralympics Cycling Open, Presented by Toyota, on **Friday, Saturday, and Sunday, April 8-10, 2022** in two locations: Big Spring Park and Cummins Research Park in Huntsville, Alabama.

This is the second consecutive year that Huntsville, the “Rocket City” has hosted this event. We are very excited to welcome the athletes back for another year!

And -- the weekend prior, on **Sunday, April 3**, we will also host a [showcase clinic](#) to identify future Para-cyclists! This will be held at the UAH Fitness Center from 2 to 4:30 p.m. Join us to learn more about your potential with para-cycling and try out different cycles based on your abilities under the guidance of U.S. Paralympics Cycling coaches. **This clinic is for individuals with physical and/or visual impairments only. Individuals (ages 18+) with physical and/or vision impairments are eligible to attend.** [Pre-register here by April 1.](#)

During the races April 8-10, the athletes will compete in three different types of road cycling events including the men’s and women’s road races, individual time trials, and handcycling team relay races. These events will include handcycling, tandem cycling, cycling, and tricycling. Learn more about U.S. Paralympics Cycling here: USParaCycling.org

This guide serves as an FAQ. It provides information on how and where you can watch the action during race weekend.

Link to:

[Parking](#)

[Viewing](#)

[Restrooms](#)

[What’s on the Schedule Each Day](#)

[Show Your Support!](#)

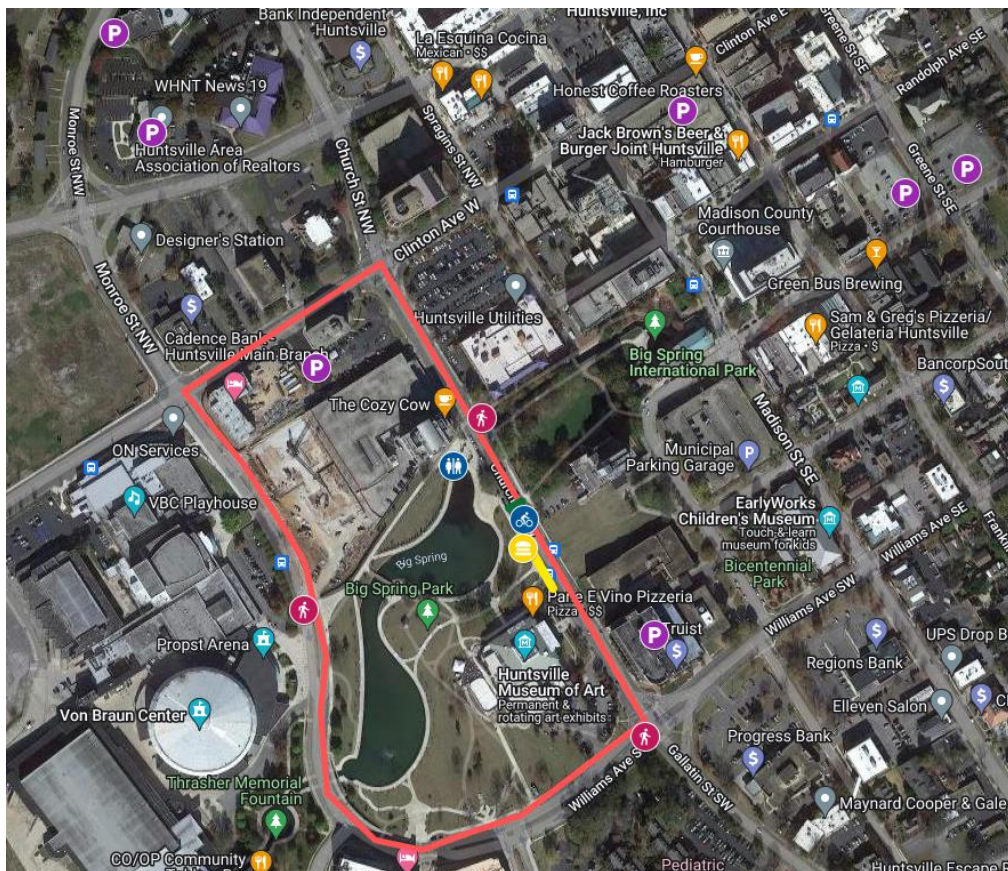
Do I need tickets?

No! The public is invited, and the races are free and rain or shine. All are welcome.

Big Spring Park Road Closures and Race Logistics

Friday's event (**April 8**) will include handcycle team relays around Big Spring Park in downtown Huntsville, and this will also include a Food Truck Fest presented by Downtown Huntsville, Inc. Come support the food truck vendors, pick a spot around Big Spring Park, and cheer on the teams! The start/finish line is near the crosswalk on Church Street, in front of Cozy Cow & Huntsville Utilities. The race is from 6 to 6:45 p.m.

IMPORTANT: Roads downtown will start to be closed on Friday between 2:30 and 4 p.m. There will be a hard close on the loop around Big Spring Park (race course) at 5:00 p.m. Please plan ahead on where to park – you will only be allowed to walk across at Church Street near Cozy Cow, Church & Williams, and in front of the VBC Arena. If you are coming to watch the para-cycling races, we strongly suggest you DO NOT park near the VBC, due to other events happening there. We suggest you park at the Board of Realtors, the Chamber, Progress Bank, or downtown, near the courthouse square. Please refer to this [interactive map](#) for several options:



On Saturday and Sunday (**April 9-10**) the races will take place in Cummings Research Park. Bring the family, pack a cooler, bring chairs and a blanket, and come watch along the outside ring of Explorer Boulevard, the loop of Cummings Research Park West. New this year -- you can also park at Columbia High School and walk a very short distance up to the course from there (you will need to drive in from Slaughter Road/Farrow Road due to Explorer being closed.)

Saturday race times: 9 a.m. to 3:30 p.m.

Sunday race times: 12 p.m. to 7 p.m. (Bridge Street Half Marathon will take place that morning)

For Saturday and Sunday -- Explorer Boulevard in Cummings Research Park will be closed to traffic starting at 6 a.m. both days to prepare the course. This is the main 'ring' for the course where you can see the racers. The Bridge Street Half Marathon will take place on Sunday morning as well, before the Para-cycling races begin.

Saturday, Explorer will be closed from 6 a.m. until about 3:30 p.m. Sunday, Explorer will be closed from about 6 a.m. to 8 p.m.

(SEE COURSE MAPS ON NEXT TWO PAGES)

TIME TRIAL

SATURDAY, APRIL 9, 2022

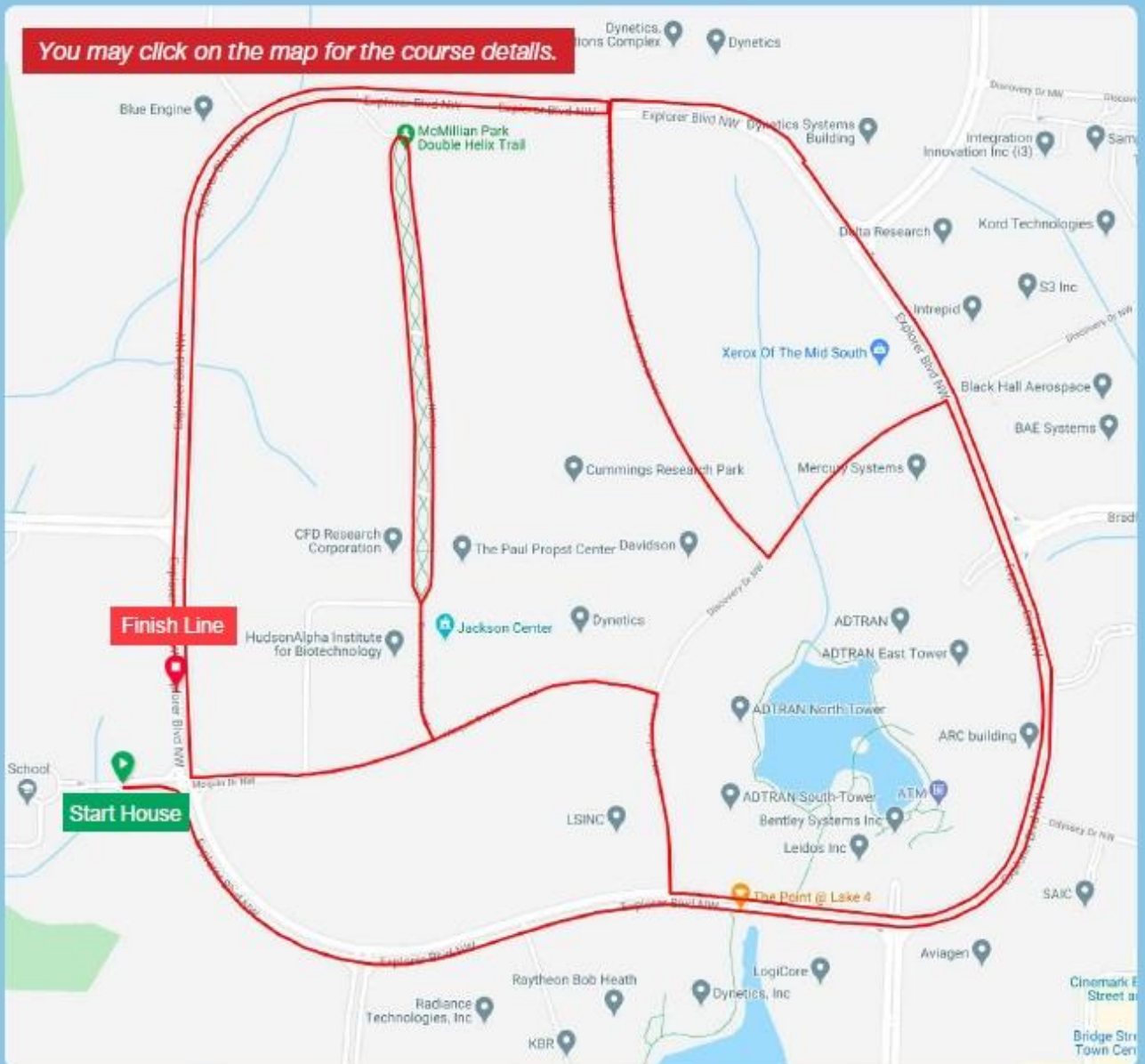


**U.S. PARALYMPICS
CYCLING OPEN**
HUNTSVILLE, AL
APRIL 8-10, 2022

Presented by TOYOTA

OFFICIAL DISTANCE: 9.3mi (15km)

ELEVATION GAIN +266ft; ELEVATION LOSS -254ft



ROAD RACE

SUNDAY, APRIL 10, 2022

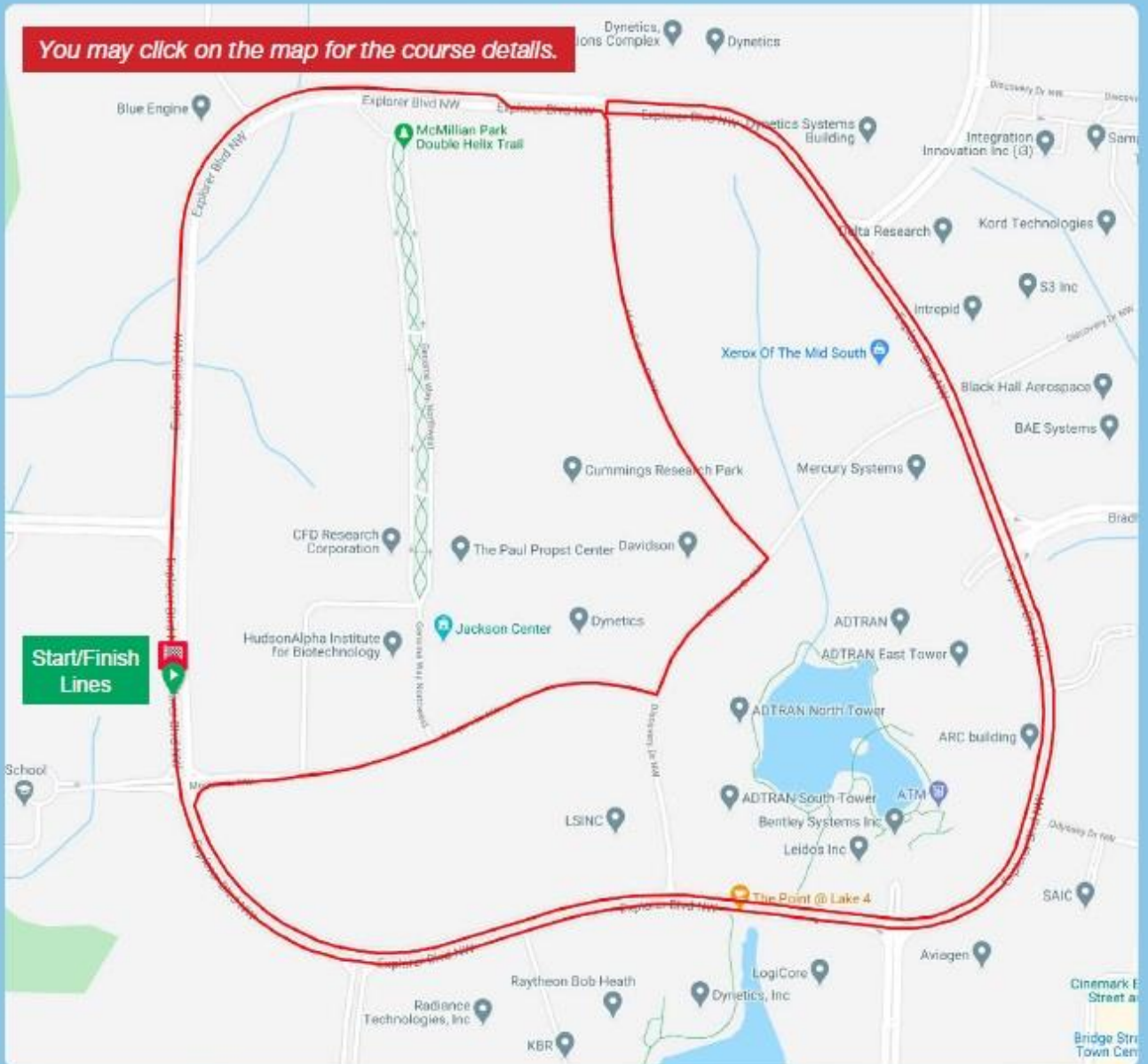


**U.S. PARALYMPICS
CYCLING OPEN**
HUNTSVILLE, AL
APRIL 8-10, 2022

Presented by TOYOTA

OFFICIAL DISTANCE: 7.5mi (12km)

ELEVATION GAIN +209ft; ELEVATION LOSS -204ft



CRP Road Closures & How to Access the Race Course

Please plan ahead on where you're going to park and how you'll get there. We suggest using these roads to come in:

Enterprise Way (coming from University Drive)

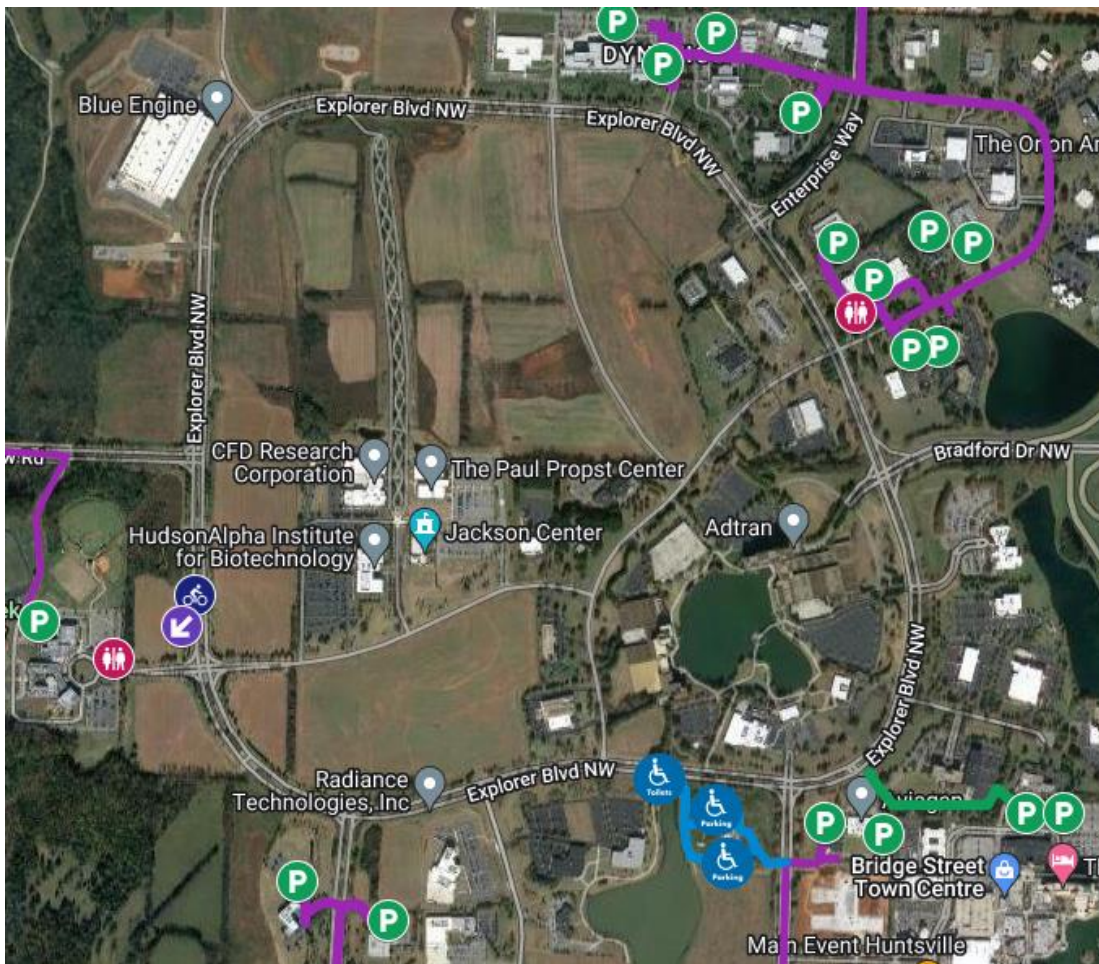
Discovery Drive (from Enterprise)

Voyager Way

Jan Davis Drive

We don't suggest using Bradford Drive, Farrow Road or Pegasus Drive, unless you arrive well before 6:00 a.m. You will **NOT** be allowed to drive onto Explorer once the course closes. At that point, Huntsville Police will redirect drivers trying to enter from these roads.

We've created this [interactive map](#) to help you plan your route ([click on the map image below for a much more detailed map.](#))



Parking

We are grateful to companies in Cummings Research Park who have offered their properties for public parking on race weekend.

1. Accessible Parking & Viewing



Auburn Huntsville Research Center's parking lot is reserved for people who need wheelchair access to the course. This business is located at 345 Voyager Way NW, Huntsville, AL 35806. This location has full access to sidewalks that lead to viewing of the course. Signs will be posted at the business showing that this lot is reserved for accessible parking ONLY, and this lot will also be staffed to ensure it remains open for those who need wheelchair access to an accessible viewing area. Others not needing this access will be directed to alternative lots.

We will also have an ADA restroom located at the accessible viewing area.

[Visit the full map](#) and zoom in to this area and click on the details we've added to help you plan your visit.

2. General Parking

There are four main parking areas that provide the closest access to the race. You may walk a very short distance to the course from each parking area. Do not directly park on any of the main roads leading to Explorer Blvd.

You may park at Columbia High School this year, but you must enter from Slaughter Road to Farrow Road. The only people that will be allowed into this lot are spectators, volunteers, athletes, media, and people who work at HudsonAlpha. **This entrance to Columbia cannot be used as a cut-through to Explorer, as Explorer will be closed to vehicle traffic.**

If entering the Park from [Jan Davis Drive](#), the following companies have offered their parking lots:

- [Sangoma](#) (445 Jan Davis Drive NW, Huntsville, AL 35806)
- [Collins Aerospace](#) (on Google it's listed as Rockwell Collins - 420 Jan Davis Drive NW, Huntsville, AL 35806)

If entering from [Voyager Way](#), you may park at these locations:

- [ASRC Federal/Aviagen/Yorktown Systems Group](#) (350 Voyager Way, Huntsville AL 35806 – and Google lists ASRC Federal as Analytical Services Inc)
- [TSC \(Technology Service Corporation\)](#) (310 Voyager Way NW, Huntsville, AL 35806)
- [Bridge Street Town Center](#) (park in the lot behind Cinemark movie theatre – you'll need to walk from there, northwest, to SAIC (6725 Odyssey Drive NW) to access viewing on Explorer) – we have detailed this route on the [interactive map](#) with a **green line**

If entering from [Enterprise Way](#), you'll turn left on [Discovery Drive](#) to access parking at these businesses:

- [Intrepid](#) (next to 615 Discovery Drive NW, Huntsville, AL 35806)
- [Delta Research](#) (access through Intrepid's lot to the North)
- [S3](#) (615 Discovery Drive NW, Huntsville, AL 35806)
- 631 Discovery Drive NW, Huntsville, AL 35806
- [Kord Technologies](#) (635 Discovery Drive NW, Huntsville, AL 35806)
- [Lakeside Office Center](#) (Pull in at 620 Discovery Drive NW, Huntsville, AL 35806)

[Dynetics](#) is also allowing people to park in their lot. Use Enterprise Way to turn right into the parking lot where the road meets Discovery. Dynetics' address is 1002 Explorer Blvd NW (you'll need to turn in from Enterprise.)

Viewing

The athletes will race along Explorer Boulevard, but most of the sidewalks are on the *interior* of Explorer. **Please note you won't be allowed to cross the road once the course closes each morning at 6 a.m.** We suggest you position along the grass on the exterior of Explorer Blvd. There's plenty of room for everyone to space out and great viewing options everywhere!

General spectators are also allowed to park at Columbia High School this year. This will put you near the start/finish line, which is an exciting spot!

We will offer a live stream of the Start/Finish line. Please check cumminsresearchpark.com/paracycling and hsvchamber.org/paracycling during race week for the link.

Police and course marshals will be located along the route, and their role is to keep the cyclists safe. If they advise you to move back, please mind them.

Also, please leave no trace, only footprints. When you leave your spot, please take all of your belongings and trash with you. Trash receptacles will not be provided.

Restrooms

We will have portable restrooms available for public use at a few spots along the course: [The Point at Lake 4](#) (just west of Explorer & Voyager Way at the accessible viewing area in front of Auburn Huntsville Research Center – this restroom is wheelchair accessible) [Intrepid](#) – (next to 615 Discovery Drive NW)

[Columbia High School \(at Explorer and Moquin\)](#)

Dynetics (at the intersection of Explorer & Mark C Smith)

What's on the Schedule Each Day

After the course closes each morning before the race, cyclists will warm up on the course one hour before race start.

The official start of each day will include presentation of the colors by Columbia High School's JROTC and the National Anthem at the Start/Finish area. We plan to broadcast this ceremony on the live stream (link to be finalized during race week.)

Saturday start time: 9 a.m.

Sunday start time: 12 p.m.

Saturday, April 9

This first day of competition is slated for individual time trials – athletes race against the clock individually to earn their best time possible. Racing starts at 9 a.m. and runs until about 2:40 p.m. followed by awards ceremonies till about 3:30 p.m. The course starts at Columbia High School and follows a 15-kilometer lap around the Park, including into the campus of HudsonAlpha Institute for Biotechnology, and up and around the McMillian Park Double Helix Trail, exiting back and eventually ending at the high school for the finish line. Athletes in some categories complete one lap, and others will complete two.

Sunday, April 10

The second day of competition will be dedicated to road races, and the course is 12.1 kilometers. Depending on the category and classification, Para-cyclists in small groups will complete between two and seven laps. These events also start and finish at Columbia High School, using all of Explorer Boulevard as well as Moquin, Discovery, and Mark C Smith Drives. Sunday's races start at 12 p.m. and will conclude by 7 p.m.

Types of Races You'll See

This isn't just a regular cycling race on two-wheeled bikes. You'll see a variety of Para-cyclists in this event:

- **Handcycle athletes** compete using an arm-powered or arm trunk power hand bike where a recumbent position is mandatory. In another type of handcycling, athletes compete from a kneeling position. You will see both types at the Huntsville event. In the event schedule – these are classified as H1, H2, H3, H4 and H5.
- **Tricycle athletes** are unable to ride a bicycle due to lack of balance and/or restriction in pedaling due to spasticity/dystonia. Severe locomotor dysfunction can be mixed pattern (athetosis/dystonia/spasticity and/or ataxia) of unilateral or bilateral involvement. In

the event schedule – these are classified with the letter T.

- **Cycling** races are classified with C1-C5, and these athletes compete with a standard bicycle.
- **Tandem Cycling** is classified with the letter B. Tandem events have an able-bodied pilot in the front, and a stoker in the back who has some degree of visual impairment. The stoker provides the power and speed while the pilot's main job is to steer.

(SEE RACE TIMES AND CLASSIFICATIONS ON THE NEXT PAGE)



U.S. PARALYMPICS CYCLING OPEN

Presented by  TOYOTA

HUNTSVILLE, AL
APRIL 8-10, 2022

COMPETITION SCHEDULE

FRIDAY, 8 APRIL, 2022 — HANDCYCLE RELAY

6:00 pm	M / W	H1 – 5	Relay	1.1 km x 9 laps	9.9 km
Teams = 3 riders. Each rider races 3 laps for a total of 9 laps.					
7:00	Awards Ceremonies				

SATURDAY, 9 APRIL, 2022 — TIME TRIALS

Session 1, 9:00 am	(M)T2 / (W)T2 / (M/W) Recumbent / (M)H1 / (W)H2 / (M)T1 / (W)T1 / (W)H1	Individual Time Trial	15 km x 1 lap	15.0 km	
Session 2, 10:00	(M)C2 / (M)C1 / (W)C5 / (W)C4 / (W)C3 / (W)C2 / (W)C1	Individual Time Trial	15 km x 1 lap	15.0 km	
11:00 - 11:45	Awards Ceremonies — All classes from session 1 and session 2				
Session 3, 11:45	(M)H3 / (M)H2 / (W)H5 / (W)H4 / (W)H3 / (M)H5 / (M)H4	Individual Time Trial	15 km x 1 lap	15.0 km	
Session 4, 12:50 pm	(M)B / (W)B / (M)C5 / (M)C4 / (M)C3	Individual Time Trial	15 km x 2 laps	30.0 km	
2:40 - 3:30	Awards Ceremonies — All classes from session 3 and session 4				

SUNDAY, 10 APRIL, 2022 — ROAD RACE

Session 1					
12:00 pm	(M)T2	Road Race	12.1 km x 3 laps	36.3 km	
12:01	(W)H3 / (W)H4 / (W)H5	Road Race	12.1 km x 3 laps	36.3 km	
12:02	(M)H1 / (M)H2	Road Race	12.1 km x 2 laps	24.2 km	
12:03	(W)C1	Road Race	12.1 km x 2 laps	24.2 km	
12:04	(M)T1	Road Race	12.1 km x 2 laps	24.2 km	
12:05	(W)T2	Road Race	12.1 km x 2 laps	24.2 km	
12:06	(M/W) Recumbent (ex)	Road Race	12.1 km x 2 laps	24.2 km	
Session 2, 1:15	(M)C1 / (M)C2 / (W)C2 / (W) C3 / (W) C4 / (W) C5	Road Race	12.1 km x 5 laps	60.5 km	
1:20	Awards Ceremonies: All classes from session 1				
Session 3, 3:10	(M)H3 / (M) H4 / (M) H5	Road Race	12.1 km x 4 laps	48.4 km	
3:15	Awards Ceremonies: All classes from session 2				
Session 4					
4:50	(M)B / (W)B	Road Race	12.1 km x 6 laps	72.6 km	
4:52	(M)C3 / (M)C4 / (M)C5	Road Race	12.1 km x 6 laps	72.6 km	
4:55	Awards Ceremonies: All classes from session 3				
7:05	Awards Ceremonies: All classes from session 4				

Show Your Support!

Many of the athletes are excited about coming back to Huntsville. They loved our southern hospitality last year – so let's give them another big Rocket City welcome!

We encourage you to make posters and hold them up as racers go by, and wear patriotic colors! If you're having an event with your company, wear your company shirts and post your support on social media with the hashtags **#Huntsville2022** and **#Paracycling** and tag us:

[Facebook.com/HuntsvilleAlabama](https://www.facebook.com/HuntsvilleAlabama)

[Instagram.com/hsvchamber](https://www.instagram.com/hsvchamber)

[Twitter.com/huntsvillealcoc](https://www.twitter.com/huntsvillealcoc)

[Facebook.com/CRPHSV](https://www.facebook.com/CRPHSV)

[Instagram.com/crphsv](https://www.instagram.com/crphsv)

[Twitter.com/CRPHSV](https://www.twitter.com/CRPHSV)

[Facebook.com/UsParalympicsCycling](https://www.facebook.com/UsParalympicsCycling)

[Instagram.com/usparacycling](https://www.instagram.com/usparacycling)

[Twitter.com/USParaCycling](https://www.twitter.com/USParaCycling)

Join us to cheer on the racers April 8 in Big Spring Park and April 9-10 in Cummings Research Park! We are honored to host this exciting event in Huntsville, Alabama. Visit cumminsresearchpark.com/paracycling and hsvchamber.org/paracycling for the latest information, and share ourhashtags in your social media posts: [#Huntsville2022](https://twitter.com/Huntsville2022) and [#Paracycling](https://twitter.com/Paracycling)

Local Event Sponsors

