

 **Parking / Registration / Reception / Start / Finish / Medical Personnel:**

- Columbia High School
- 300 Explorer Blvd NW, Huntsville AL 35806

**Race Route:**

- Depart Columbia High School
- Left Turn on Explorer BLVD
- Right Turn on Mark C Smith Drive
- Right Turn on Discovery Lane
- Right Turn on Explorer BLVD
- Left Turn to Columbia High School

1M Turn around = Farrow Road

1 Lap = 5K

2 Laps = 10K

**Food/Beverage:**

- Snacks, Water and Gatorade will be available at registration!
- Nicas Grill & Café Food Truck will be onsite!

**Entertainment:**

DJ Stir fry

**Huntsville PD Checkpoints:**

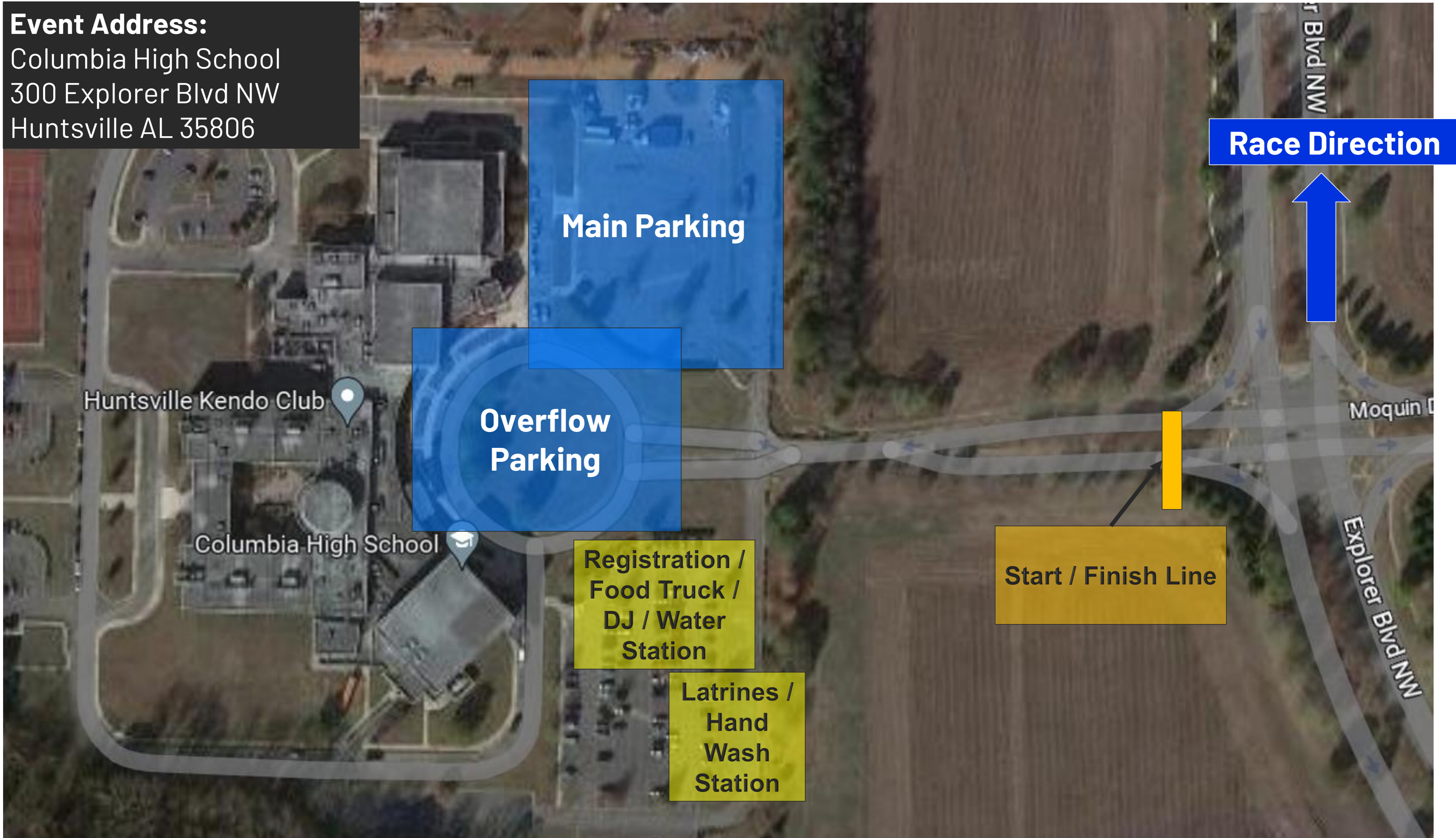
- Each major intersection

**Medical Support:**

- The city of Huntsville will have an Ambulance and medical personnel at the Columbia High School parking lot.



**Event Address:**  
Columbia High School  
300 Explorer Blvd NW  
Huntsville AL 35806



# Not a Runner? Come Volunteer with us!

## Earth Day Volunteer Event

Saturday, April 22nd from 8AM - 12PM

Enable of Madison County

Participate in building wheel chair ramps for the disabled or in gardening activities to feed the elderly and home bound.

This is a Blue Origin sponsored event



## Garden Details



4725 Bob Wallace Ave SW  
Huntsville, AL 35805

Next to the Botanical Gardens on the side closest to Jordan Lane

Activities may include:  
mulching, weeding, planting, etc.

All garden tools will be provided

## Construction Details

Enable Warehouse  
701 Andrew Jackson Way  
Huntsville, AL 35801

Activities may include: measuring, cutting, and building 2-3 wheel chair ramps

Hand tools/Equipment provided



REGISTER HERE: <https://www.surveymonkey.com/r/HuntsvilleEarthDayVolunteer>